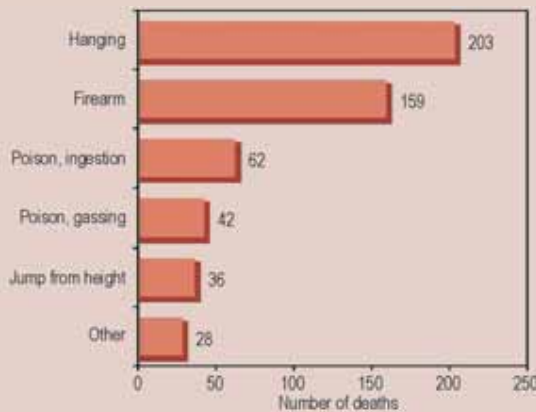


4.4 SUICIDE

The cause of death was unknown in 5 (0.9%) of the 530 suicides. Of the remaining deaths, the leading external cause was hanging (38.7%), followed by firearms (30.3%), poison ingestion (11.8%), and gassing (8%).

Figure 81

Leading external causes of suicide
(N = 530)

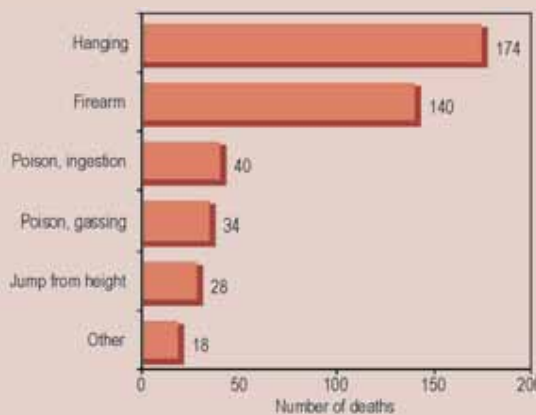


4.4.1 External cause of suicide, by sex

There were 5 male deaths as a result of suicide for every female death from suicide. Among males the cause of death was unknown in 4 (0.9%) of the 434 cases. Of the remaining deaths, the leading external cause was hanging (40.5%), followed by firearms (32.6%), poison ingestion (9.1%) and gassing (7.9%).

Figure 82

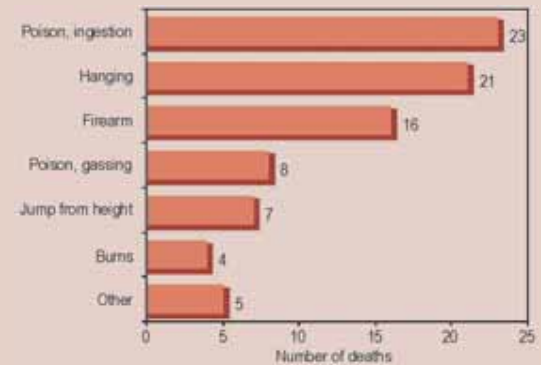
Leading external causes of death by suicide among males (N = 434)



Among females the cause of death was unknown in 1 (1.2%) of the 84 cases. Of the remaining deaths, the leading external cause was poison ingestion (27.7%), followed by hanging (25.3%), firearms (19.3%), and gassing (9.6%).

Figure 83

Leading external causes of suicide among females
(N = 84)



4.4.2 External cause of suicide, by age

Age was unknown in 87 (16.4%) of the 530 cases. Of the remaining cases, the average age was 35 (\pm 13.2) years. The leading external causes of suicide in the various age groups were as follows:

- **0-14 years** — hanging (66.7%);
- **15-24 years** — hanging (44.7%) followed by firearms (23.5%);
- **25-34 years** — hanging (38.3%) followed by firearms (29%);
- **35-44 years** — hanging (36.8%) followed by firearms (24%);
- **45-54 years** — firearms (42.4%) followed by hanging (33.3%);
- **55-64 years** — firearms (52.2%) followed by poison ingestion and gassing (each 17.4%); and
- **65+ years** — gassing (38.5%) followed by firearms (30.8%)

4.4.3 Suicide by scene of death, by sex

The scene of death was unknown in 93 (21%) of male and 22 (26%) of female suicides. Of the remaining deaths, the most common scenes among:

- **males** were private homes (68%) followed by residential institutes (15%); and
- **females** were private homes (69.4%) followed by residential institutes (9.7%).

Figure 84

Leading scenes of suicide among males (N = 434)

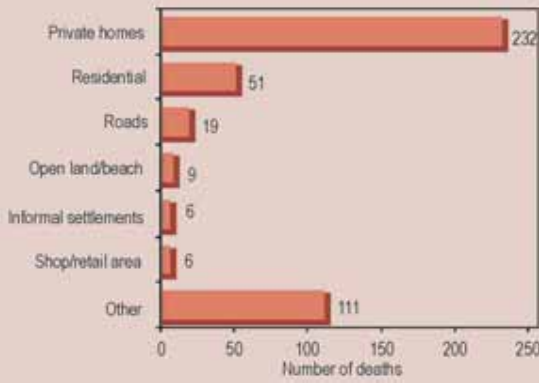
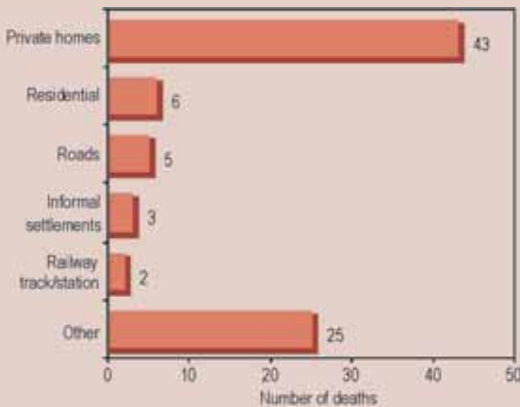


Figure 85

Leading scenes of suicide among females (N = 84)

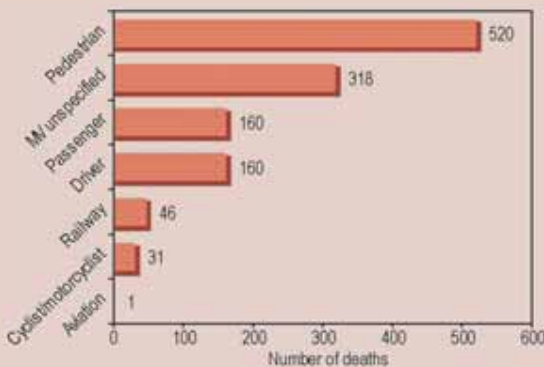


4.5 TRANSPORT-RELATED DEATHS

For transport-related deaths the leading external cause was pedestrian fatalities (42.1%), followed by motor vehicle unspecified deaths (25.7%), and passenger and driver fatalities (each 12.9%).

Figure 86

External causes of transport-related deaths (N = 1236)

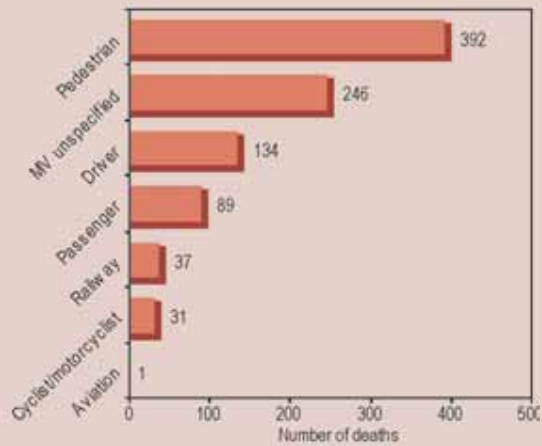


4.5.1 External cause of transport-related deaths, by sex

There were 3.4 male deaths as a result of transport for every female death. Among males most were pedestrian fatalities (42.2%), followed by motor vehicle unspecified deaths (26.5%), and driver fatalities (14.4%).

Figure 87

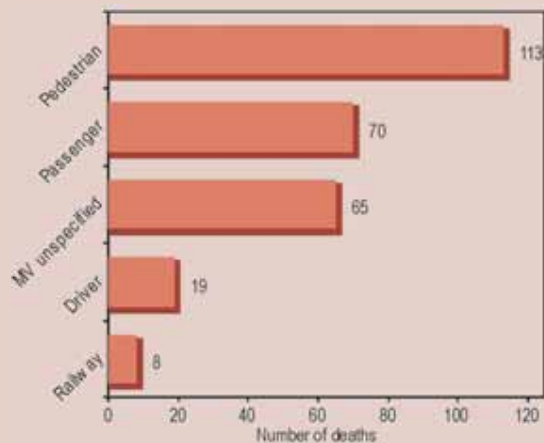
External causes of transport-related deaths among males (N = 930)



Among females most were pedestrian fatalities (41.1%), followed by passenger fatalities (25.5%), and motor vehicle unspecified deaths (23.6%).

Figure 88

External causes of transport-related deaths among females (N = 275)



4.5.2 External cause of transport-related deaths by age

Age was unknown in 401 (32.4%) of the 1236 cases. Of the remaining cases, the average age was 34 (\pm 17.2) years. The leading external causes of transport-related deaths in the various age groups were as follows:

- **0-14 years** — pedestrians (59.8%);
- **15-24 years** — pedestrians (39%) followed by motor vehicle unspecified fatalities (24.4%);
- **25-34 years** — motor vehicle unspecified fatalities (33.2%) followed by pedestrians (29.6%);
- **35-44 years** — pedestrians (39.5%) followed by motor vehicle unspecified fatalities (30.6%);
- **45-54 years** — pedestrians (36.3%) followed by motor vehicle unspecified fatalities (34.1%);
- **55-64 years** — motor vehicle unspecified fatalities (34.5%) followed by pedestrians (31%); and
- **65+ years** — pedestrians (36.5%) followed by motor vehicle unspecified fatalities (30.8%).

4.5.3 Transport-related deaths and alcohol

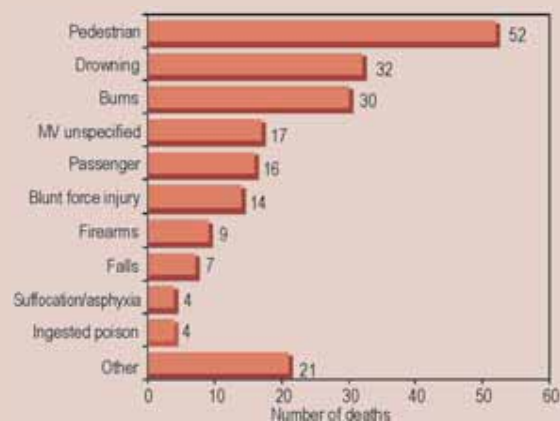
More drivers (60%) tested positive for alcohol in the blood than other transport-related deaths. A large percentage of pedestrians (57%) were also alcohol-positive — this group had the highest mean BAC, of 0.23 g/100 ml.

4.6 DEATHS FROM INJURY AMONG CHILDREN YOUNGER THAN 15 YEARS

The cause of death was unknown in 1 (0.5%) of the 206 deaths from injury among children younger than 15 years. Of the remaining deaths, the leading external cause was pedestrian fatalities (25.4%), followed by drowning (15.6%), burns (14.6%) and unspecified motor vehicle fatalities (8.3%).

Figure 89

Leading external causes of deaths from injury among children younger than 15 years (N = 206)



4.6.1 Leading external causes of deaths from injury among children younger than 15 years, by sex

There were 1.6 male deaths for every female death. The leading external cause of death in males was pedestrian fatalities (24.0%), followed by drowning (18.4%), burns (17.6%) and passenger fatalities (8.0%).

Table XIII

Blood alcohol levels (g/100 ml) by external cause of transport deaths

External cause	BACs done N (%)	BAC positive N (%)	Mean BAC	Std dev.
Pedestrian (520)	328 (63.1)	186 (56.7)	0.23	0.11
MV unspecified (318)	142 (44.7)	68 (47.9)	0.19	0.11
Driver (160)	107 (66.9)	64 (59.8)	0.19	0.11
Passenger (160)	110 (68.9)	49 (44.5)	0.12	0.11
Railway (46)	34 (73.9)	8 (23.5)	0.20	0.14
Bicycle/motorbike (31)	24 (77.4)	10 (41.7)	0.09	0.09
Total (1235)	745	385	0.20	0.12

Figure 90

Leading external causes of deaths from injury among male children younger than 15 years (N = 125)

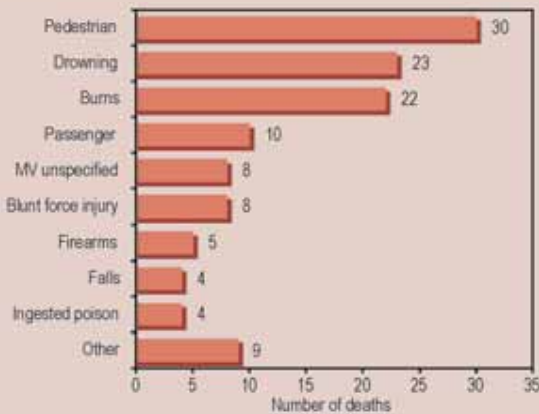
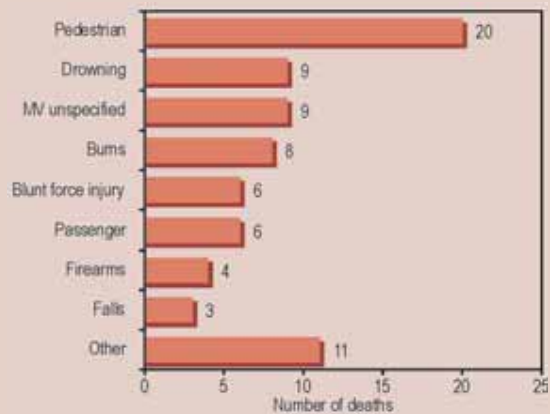


Figure 91

Leading external causes of deaths from injury among female children younger than 15 years (N = 76)



Among females the cause of death was unknown in 1 (1.3%) of the 76 cases. Of the remaining deaths, the leading external cause was pedestrian fatalities (26.7%), followed by drowning (12.0%), unspecified motor vehicle fatalities (12.0%) and burns (10.7%).

4.6.2 External cause of deaths from injury among children younger than 15 years, by age

The average age of death was 5 (± 4.2) years. The leading external causes of deaths from injury among children younger than 15 years in the various age categories (see Table XIV) were as follows:

- **<1 year** — burns (25.0%) followed by abandoned baby (20.0%);
- **1-4 years** — drowning (22.2%) followed by pedestrian fatalities (15.6%);
- **5-9 years** — pedestrian fatalities (44.6%) followed by burns (12.5%);
- **10-14 years** — pedestrian fatalities (28.2%) followed by burns (12.8%).

Table XIV

Leading external causes of death from injuries among children 15 years, 2003

Rank	Age groups (yrs)				Overall ranking*
	<1	1-4	5-9	10-14	
1	Burns 5	Drowning 20	Pedestrian 25	Pedestrian 11	Pedestrian 52
2	Abandon. baby 4	Pedestrian 14	Burns 7	Burns 5	Drowning 32
3	Pedestrian 2	Burns 13	Drowning 6	Drowning 5	Burns 30
4	Falls 2	Passenger 9	Firearms 2	Passenger 5	MV unspecified 17
5	Poisoning 1	Blunt 8	Blunt 2	Blunt 3	Passenger 16
Total deaths#	20	91	56	39	206

* The overall ranking column includes all deaths from each specific cause of death, even if the specific cause was not one of the five leading causes of death in a particular age group.

Total deaths refers to all deaths in the specific age category.

4.6.3 Deaths from injury among children younger than 15 years by scene of death, by sex

The scene of death was unknown in 24 (19%) of male and 11 (14%) of female deaths from injury among children younger than 15 years. Of the remaining deaths, the most common scenes among:

- **males** were roads (47.5%) followed by private homes (32.7%); and
- **females** were roads (56.9%) followed by private homes (23.1%).

Figure 92

Leading scenes of deaths from injury among male children younger than 15 years (N = 125)

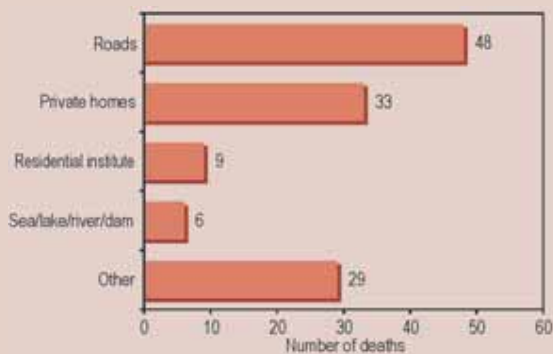


Figure 93

Leading scenes of deaths from injury among female children younger than 15 years (N = 76)

