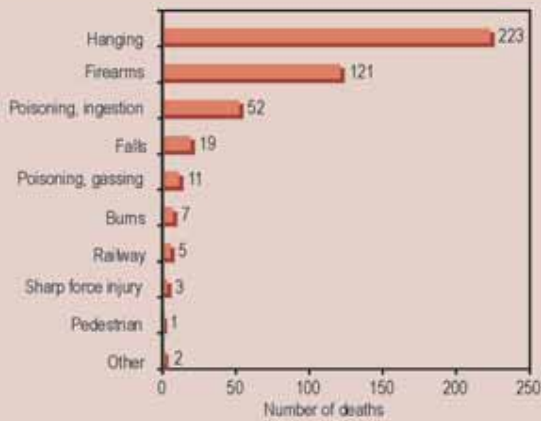


Figure 131

Leading external causes of suicide (N = 444)



6.4.1 External cause of suicide, by sex

There were 4.3 male deaths as a result of suicide for every such female death. Among males the cause of death was unknown in 0.3% of the 360 cases. Of the remaining deaths, the leading external cause was hanging (50.1%), followed by firearms (31.8%), poison ingestion (8.4%) and falls (4.2%).

Figure 132

Leading external causes of suicide among males (N = 360)

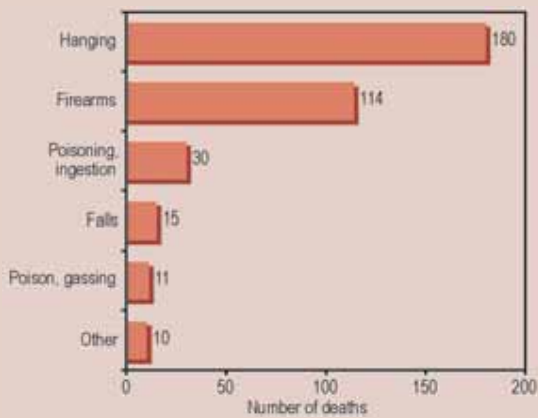
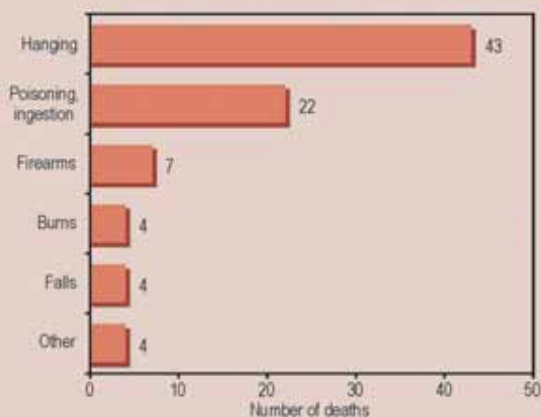


Figure 133

Leading external causes of suicide for females (N = 84)



Among females the cause of death was unknown in 1.2% of the cases. Of the remaining deaths, the leading external cause was hanging (51.8%), followed by poisoning ingestion (26.5%), firearms (8.4%), and burns and falls (both 4.8%).

6.4.2 External cause of suicide, by age

Age was unknown in 2 of the 444 cases. Of the remaining cases, the average age was 35 (\pm 14.8) years. The leading external causes of death by suicide in the various age groups were as follows:

- **0-14 years** — hanging (83.3%);
- **15-24 years** — hanging (63.8%) followed by firearms (19.0%);
- **25-34 years** — hanging (52.6%) followed by firearms (29.2%);
- **35-44 years** — hanging (44.3%) followed by firearms (30.0%);
- **45-54 years** — hanging (39.7%) followed by firearms (27.0%);
- **55-64 years** — hanging (39.3%) followed by firearms (32.1%); and
- **65+ years** — firearms (60.0%) followed by hanging (20.0%).

6.4.3 Suicide by scene of death, by sex

The scene of death was unknown in 56 (16%) of male and 18 (21%) of female suicides. Of the remaining deaths, the most common scenes among:

- **males** were in private homes (55.8%) followed by informal settlements (23.1%); and
- **females** were in private homes (72.7%); followed by informal settlements (13.6%).

Figure 134

Leading scenes of suicide among males (N = 360)

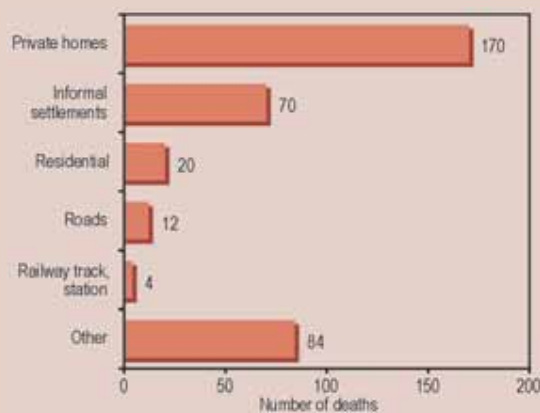
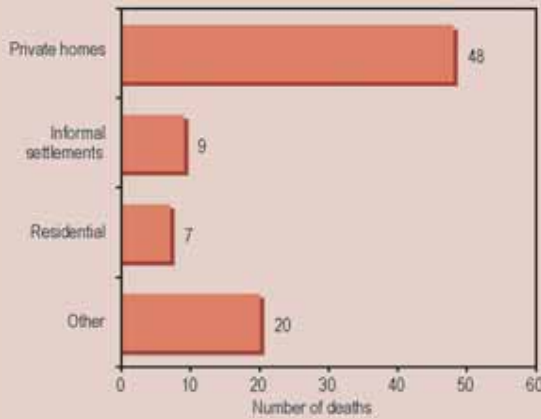


Figure 135

Leading scenes of suicide among females (N = 84)

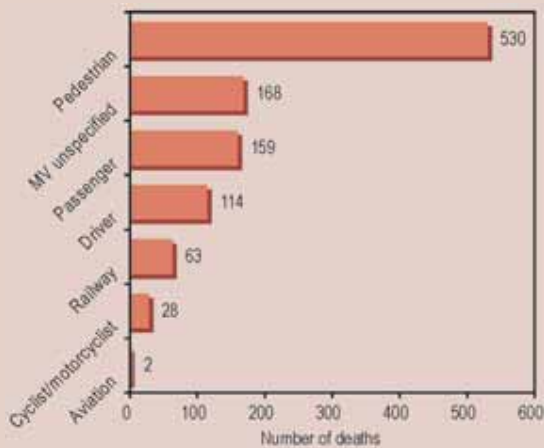


6.5 TRANSPORT-RELATED DEATHS

The leading external cause of transport-related deaths was pedestrian fatalities (49.8%), followed by unspecified motor vehicle fatalities (15.8%), passenger fatalities (14.9%) and driver fatalities (10.7%).

Figure 136

Leading external causes of transport-related deaths (N = 1064)

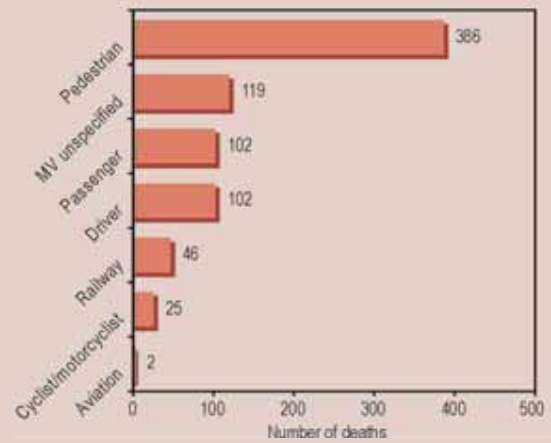


6.5.1 External cause of transport-related deaths, by sex

There were 2.8 male deaths as a result of transport for every such female death. Of all transport-related deaths, the leading external cause was pedestrian fatalities (49.4%), followed by unspecified motor vehicle fatalities (15.2%), driver fatalities and passenger fatalities (both 13.0%), and railway fatalities (5.9%).

Figure 137

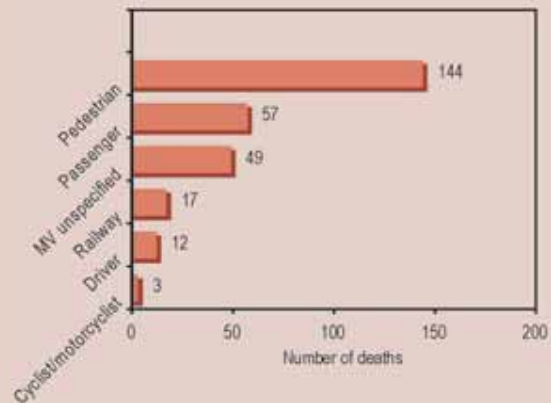
Leading external causes of transport-related deaths among males (N = 782)



Of all transport-related deaths, the leading external cause for females was pedestrian fatalities (51.1%), followed by passenger fatalities (20.2%), unspecified motor vehicle fatalities (17.4%), and railway fatalities (6.0%).

Figure 138

Leading external causes of transport-related deaths among females (N = 282)



6.5.2 External cause of transport-related deaths by age

Age was unknown in 7 of the 1057 cases. Of the remaining cases, the average age was 33 (\pm 15.6) years. The leading external causes of transport-related deaths in the various age groups were as follows:

- **0-14 years** — pedestrian fatalities (74.4%);
- **15-24 years** — pedestrian fatalities (40.9%) followed by passenger fatalities (20.4%);
- **25-34 years** — pedestrian fatalities (46.4%) followed by motor vehicle fatalities unspecified (17.9%);
- **35-44 years** — pedestrian fatalities (51.2%) followed by motor vehicle fatalities unspecified (17.2%);
- **45-54 years** — pedestrian fatalities (51.0%) fol-

lowed by motor vehicle fatalities unspecified (17.5%);

- **55-64 years** — pedestrian fatalities (31.4%) followed by driver fatalities (25.5%); and
- **65+ years** — pedestrian fatalities (50.0%) followed by passenger fatalities (23.8%).

6.5.3 Transport-related deaths and alcohol

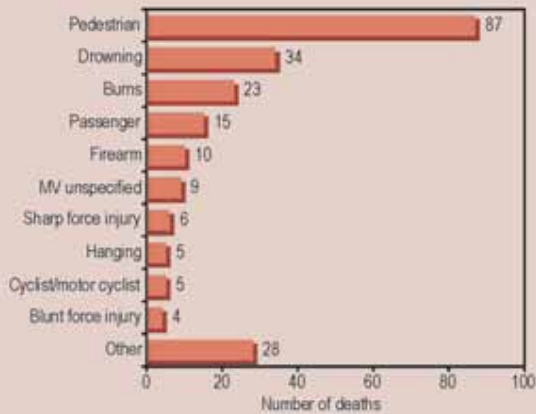
More drivers (62%) tested positive for alcohol in the blood than other transport-related deaths. A large percentage of pedestrians (55%) were also alcohol-positive, and this group had the highest mean BAC at 0.23 g/100 ml.

6.6 DEATHS FROM INJURY AMONG CHILDREN YOUNGER THAN 15 YEARS

The cause of death was unknown in 0.9% of deaths from injury among children younger than 15 years. Of the remaining deaths, the leading external cause was pedestrian fatalities (38.8%), followed by drowning (15.2%), burns (10.3%) and passenger fatalities (6.7%).

Figure 139

Leading external causes of deaths from injury among children younger than 15 years (N = 226)



6.6.1 Leading external cause of deaths from injury among children younger than 15 years, by sex

Among males the cause of death was unknown in 0.8% of the cases. Of the remaining deaths, the leading external cause was pedestrian fatalities (35.2%), followed by drowning (19.5%), burns (9.4%), and passenger fatalities (7.8%).

Figure 140

Leading external causes of deaths from injury among male children younger than 15 years (N = 129)

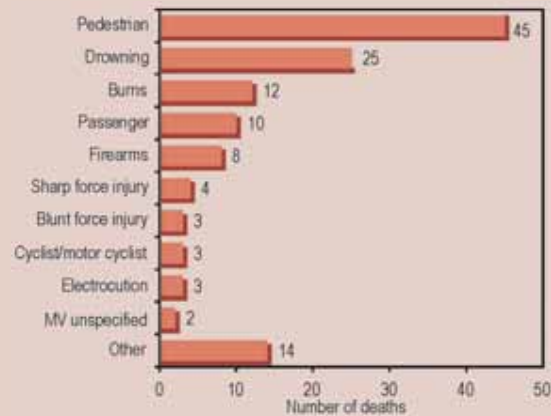


Figure 141

Leading external causes of deaths from injury among female children younger than 15 years (N = 97)

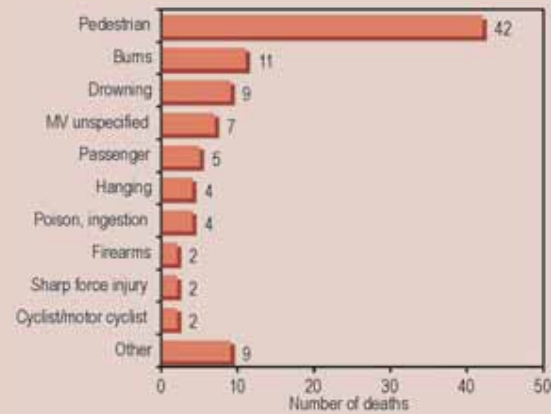


Table XXI

Blood alcohol levels (g/100 ml) by external cause of transport deaths

External cause	BACs done N (%)	BAC positive N (%)	Mean BAC	Std dev.
Pedestrian (530)	283 (53.40)	157 (55.48)	0.23	0.10
MV unspec. (168)	46 (27.38)	18 (39.13)	0.16	0.09
Passenger (159)	52 (32.70)	22 (42.31)	0.13	0.07
Driver (114)	77 (67.54)	48 (62.34)	0.18	0.08
Railway (63)	37 (58.73)	8 (21.62)	0.21	0.05
Total (1034)	495	253	0.18	0.08

Among females the cause of death was unknown in 1.0% of the cases. Of the remaining deaths, the leading external cause was pedestrian fatalities (43.8%), followed by burns (11.5%), drowning (9.4%), and unspecified motor vehicle fatalities (7.3%).

6.6.2 External causes of deaths from injury among children younger than 15 years, by age

The average age was 7 (\pm 4.2) years. The leading external causes of deaths from injury among children younger than 15 years in the various age groups were as follows:

- **<1 year** — drowning (27.3%);
- **1-4 years** — pedestrian fatalities (28.8%) followed by burns (18.6%);
- **5-9 years** — pedestrian fatalities (57.8%) followed by drowning (20.5%);
- **10-14 years** — pedestrian fatalities (29.6%) followed by passenger fatalities (11.3%);

6.6.3 Deaths from injury among children younger than 15 years by scene of death, by sex

The scene of death was unknown in 11 (9%) of male and 8 (8%) of female deaths from injury among children younger than 15 years. Of the remaining deaths, the most common scenes among:

- **males** were roads (52.5%) followed by informal settlements (18.6%); and
- **females** were roads (65.2%) followed by private homes (16.9%).

Figure 142

Leading scenes of deaths from injury among male children younger than 15 years (N = 129)

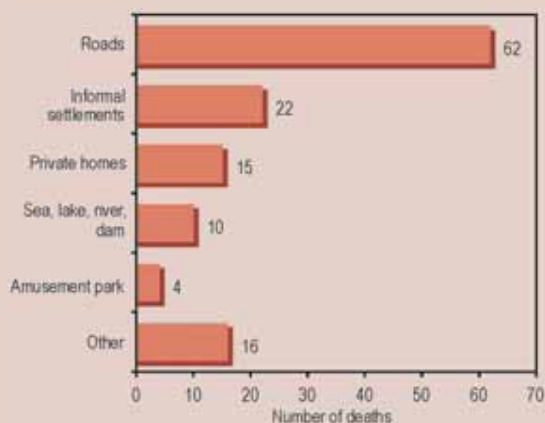


Figure 143

Leading scenes of injury deaths among female children younger than 15 years (N = 97)

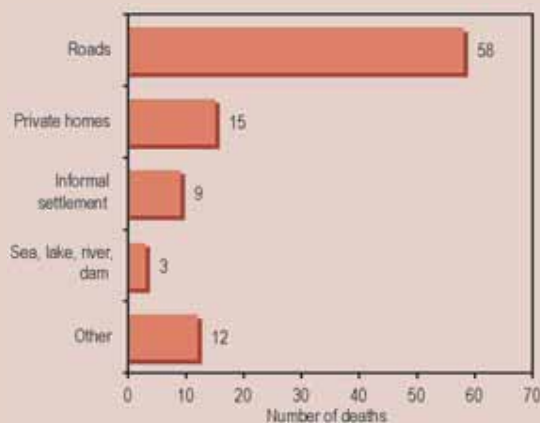


Table XXII

Leading external causes of death from injury among children < 15 years, 2003

Rank	Age groups (yrs)				Overall ranking*
	<1	1-4	5-9	10-14	
1	Drowning 3	Pedestrian 17	Pedestrian 48	Pedestrian 21	Pedestrian 87
2	Abandon. baby 2	Burns 11	Drowning 17	Passenger 8	Drowning 34
3	Burns 2	Drowning 8	Burns 5	Sharp 6	Burns 23
4	Blunt 1	Passenger 5	MV unspec. 3	Drowning 6	Passenger 15
5	Choking 1	Choking 3	Firearm 2	Firearm 6	Firearm 10
Total deaths#	12	59	83	72	226

* The overall ranking column includes all deaths from each specific cause of death, even if the specific cause was not one of the five leading causes of death in a particular age group.

Total deaths refers to all deaths in the specific age category.